



Model: Continental 1900

Yard: Wim van der Valk, Waalwijk, The Netherlands

Year built: 2005 / 2006

Material: Steel Grade "A"

Dimensions: 19,64 x 5,00 x 1,50

Main engines: 2 x 500 Hp Volvo Penta D 9 Common Rail Diesel

Cabins: Owners, VIP, convertible Guest/Office

Location: The Netherlands; Heusden De Wiel

Hours: Ca. 170 h

Price indication: Euro 1.390.000; VAT paid

## General Specification

Dimensions:	Loa.:	19,64
	Hull:	19,34
	Beam:	5,00
	Draft:	1,50
	Min. Height above Waterl:	4,65
	Empty weight:	ca. 43.000 Kg
	Gross weight: ca.	ca. 51.000 Kg
Certificate:	CE – “A”, CE-RCD-506 dated 16-09-2005	
Flag:	German	
Registration:	German (Ship Certificate No. 2605 dated 13.12.2005)	
Measurement:	Special Tonnage Certificate for Pleasure Craft dated 11.11.2005	
Insurance:	Euro 1.700.000; Insurance value Hull incl. Engines	

## Construction

Year built:	2005 / 2006
In Service:	June 1 <sup>st</sup> , 2006
Builder:	Wim van der Valk; Waalwijk, The Netherlands
Yard Number:	WV 0049
Material:	Built in sandblasted steel Grade “A” with framing each 50 cm. Hull with integrated bathing platform.
Thermic insulation:	Hull down to Waterline and Superstructure insulated with glass wool and PU-Foam. Tinted insulating windows.
Acoustic insulation:	Engine room anti noise materials down to waterline with aluminium sheeting. Installations mounted on rubber sockets.
Portholes:	<b>Stainless steel frames</b> hull and windows with security glass, of which all can be opened and with insect screens.
Mast:	Mast carrying most of the antennas, searchlights, flags and wind metering-unit can electrically be lowered.

Deck's furniture: **Stainless steel** bollards, hand- and sea-railings, 2x 4 fender holders, ladder and all other applications including anchor and winches.

Paint System: Hull: Awlgrip System; Majestic Blue  
Superstructure: Awlgrip System; Oyster White

Decks: Teak at Deck and bathing platform with integrated ladder. Lighting with dimmed spots and step-lights on decks and bathing-platform.

## **Accommodation & Layout**

Layout: absolutely spacious 2/3 cabin-layout for 4/5 persons. Lighting with dimmed spots, light-hoses and step-lights throughout the ship.

Interior: Light Mahogany combined with light beige Leather- resp. Vinyl-Panels throughout the ship. **Granite floors** in Wheelhouse and Pantry with additional **Granite wall covers** in both Bathrooms. Beige Carpet floors in Saloon and Cabins.

Wheelhouse: L-shaped leather bench whereof the most forward seat is convertible as a navigators seat; fixed table; sideboard with sink and built in TV and refrigerator, adjustable helmsman seat. Teak entrance-door with separate insect-screen; **large electrically operated sun-roof; all windows with electrically operated luxaflex-shades or plissés.**

Salon: L-shaped fabrics sofa with small table; sideboard containing TV-set and **BOSE 48**; several drawers; **all windows with electrically operated luxaflex shades.**

Dining: Fabrics bench with three-edged table for 4/5 persons. Nice arrangement with plenty of locker-space for glassworks, crockery and cutlery seaworthy stowed.

Galley: Located near Dining Area. **Granite work top** with sink. Teak covered ceramic plate. Plenty of storage space.

Owners Cabin: Huge cabin with large double bed 2,00 x 1,60; dressing table, bench, and plenty of lockers located stern. Four port holes and one large window/escape-hatch. Integrated is an office with a large office-desk and two additional port holes. The office can easily be separated from owners cabin and converted into a

Guest Cabin: with one single bed and a small locker.

Owners Bathroom: Luxury Granite-covered en-suite bathroom with two port holes and a separate door for direct access. Electrical fresh water flushing toilet and shower.

VIP-Cabin: One spacious cabin with double bed 1,95 x 1,40, plenty of lockers. Two port holes and one escape hatch.

VIP Bathroom: Luxury Granite-covered en-suite bathroom with one port hole. Electrical fresh water flushing toilet and shower.

## Engines

Main engines: Twin Diesel Engines make Volvo Penta type D 9-500, Common Rail 6-cylinder, built in 2005.  
Crankshaft power: 500 Hp at 2.600 rpm.  
Engines with turbochargers and aftercoolers. Seawater-cooled tubular heat exchanger. Water injected stainless steel exhaust. GRP mixer-silencer with waterlock.  
Separate seawater-filter for each engine with **crossfeed management**.  
**Double fine fuel filters** of spin-on type with water separator, water alarm and fuel De-bug System for each engine.  
24 V 80 A alternator each engine.

Engines numbers: SB-Engine: D 9 A2A 2009018779  
PS-Engine: D 9 A2A 2009018779

Monitoring: Engine-Control-Data-Display and warning advisory integrated in Raymarine E 120 screen.  
Separate visual and audible warning-system by Volvo Penta.

Control-System: Volvo Penta Electronic vessel control (EVC) with stern located remote controls incl. bow-and sternthrusters.

Gearboxes: Twin Disc hydraulic gearboxes type MG 5075; reduction: 2,04:1.

Prop-Shafts: Water-lubricated conventional 60 mm propeller-shafts stainless steel 316 with Python Type p350-w-60 and 5 blade bronze propellers.

Performance: Maximum speed: ca. 11,5 knots @ 2.200 rpm  
Cruising speed: ca. 9,0 knots @ 1.800 rpm  
Economic speed: ca. 8,0 knots @ 1.400 rpm

Range ca. 1.000 NM at economic speed, fuel flow ca. 18 lt./h per eng.

## Tankage

Fuel: Total fuel capacity ca. 5.000 lit.

Main tank 3.000 lit. with electronic capacity meter.  
Separate aux. tank below bathing platform ca. 2.000 lit.

Freshwater: Total water capacity ca. 1.500 Lit. in three tanks with two capacity meters.  
**Schenker Modular Electron 60 Watermaker**, Capacity ca. 60 Lit./h / 1.400 Lit./Day; with Control Panel located near Pantry.  
UDS UV- Water Disinfection Unit.

Grey/Blackwater: Total capacity ca. 500 Lit. Rheinstrom automatic heavy duty electric Sewage pump system with level alarm and direct overboard discharge and connection for shore discharge at deck.  
**Haman Super Mini Sewage Treatment Plant**; Capacity ca. 2.500 Lit./Day; with Control Panel located near Pantry.

## Installations

Air-condition: One air-condition make Cruisair for wheelhouse and salon with central thermostat climate control. Capacity 24.000 BTU.

Heating: Kabola B 17.tap with ELCO Klöckner Burner, Capacity 19,7 kW. Warm water circulation system with hot-water preparation, 80 Lit. boiler and **floor-heating throughout the ship**. Separate thermostat climate controls for each room.

Hydropack: Installed in the engine compartment for bow- and sternthruster, stabilizers and rudder-system driven by two Hydro-Pumps installed on each main engine.

Bow-/Sternthruster: Hydraulically operated by joysticks with variable speeds, max. 22 Hp. each.

Stabilizers: **Make Najad Marine Systems, Multisea II hydraulic operated fin stabilizers.**

Steering Gear: Hydraulically operated by a servo wheel pump at wheel and joystick.

Anchor winch: One Muir anchor winch electrically operated 24 V / 1.200 W with capstan. Anchor and 50 m chain stainless steel.

Capstans: One bow anchor capstan, two stern capstans; electrically operated.

Gangway: Make Besenzoni electro-hydraulically operated; Capacity 350 Kg.

Bilge-System: Three 24 V electric heavy-duty pumps Make Jabsco total capacity ca. 470 Lit/h. One manual pump. Additional capacity by using the main-engine's seawater-pumps.

Water pressure: 24 V hydrophore electric heavy-duty pump with pressure tank and filter-system with UDS UV-light based water disinfectant.

Search Lights: Two Jabsco remote controlled searchlights with double bulbs.

Sun roof: Electric operated large sun roof in wheelhouse.

Sun shade: Electric operated sun shade over aft deck.

## Electrical Systems

Professional high quality electrical installation according to the  
“Guideline Pleasure Crafts 94/25/ EG & 2003/44/ EG; ISO-Norm  
10133 and 13297”

DC - System: 24 V

Batteries: A total of 11 Batteries is installed.

Two Engine start sets, each with two 12 V/ 100 Ah Batteries; for the  
main-engines.

Set of six 12 V/ 100 Ah Service-Batteries

One 12 V / 85 Ah Generator start set

AC – System: 220 V / 50 Hz

Generator: Mastervolt Whisper 12 Ultra; 12 KVA at 1.500 rpm. With separate  
Charger for its starter battery.

Battery Charger: Mastervolt Mass 24 / 100, 24 V / 100 A  
Mastervolt IVO Smart 12 / 10, 12 V / 10 A

Inverter: Mastervolt Mass Sine 25 / 5000; 24 V / 5000 W  
Alfatronix PV6i, 24 V – 12 V; 12 V / 6 A  
Alfatronix PV12i, 24 V – 12 V; 12 V / 12 A

Shore power: Shore power supply 220 V with intakes at bathing platform and forward  
SB Main Deck.

Panels: Mastervolt Power System Control Panel  
Mastervolt Generator Control Panel located near Pantry.

## Navigation Equipment

### Raymarine Equipment

Specific Equipment: Compass, Fluxgate )  
Rudder indicator, )  
Tridata, indicator with separate depth transducer )  
Wind metering unit ) all ST 60 Series.

Radar with Marpa and AIS, Antenna 48 inch

Chartplotter: **Two E 120 Screen-Systems** with integrated GPS-Plotters, Radar, Engine Monitoring and Camera-System (five cameras)

Auto Pilot: ST8001 Smartpilot Controller with Joystick

All Raymarine Equipment including VHF is interconnected via "SeaTalk Data Bus System"

Other equipment:

Sonar: **Interphase Twinscope Forward looking sonar.**

## **Communication**

VHF: Ray 240E DSC and ATIS with speaker, loud hailer and foghorn  
Ray 101E Handset

AIS: **True Heading AIS-CTR Class B Transponder** with integrated GPS and interface to Raymarine E 120 Chart Plotter System.

Telephone / Fax: UMTS based telephone device connected with two handhelds with intercom and Fax-machine.

## **Domestics**

Refrigerator: 1 x Bosch ca. 120 lt. front load with separate 3 drawers freezer.  
1 x U-Line front load in Wheelhouse Bar.

Cooker: Siemens 4-plate ceramic.

Oven: Siemens hot air with integrated grill and micro-wave.

Hob Ventilator: Gaggenau

Dishwasher: Siemens

Washer/Dryer: Bosch front load.

## **Entertainment**

Stereo / TV

Salon: Philipps TV-Set with digital receiver and **KVH Trac Vision 4HP Antenna. BOSE Lifestyle 48 Entertainment-Center with DVD and 6 Speakers.**

Wheelhouse: Sharp Flat-TV-Set, Radio/CD

Owners and  
VIP cabin: Sharp Flat-TV-Set each.

Tender: Zodiac 340 DL with Yamaha 30 Hp. 4-stroke, new 08/2007.

## Safety & Security

Life raft: SOSTECHNIC RFY 6/3 with Container, 6 Persons; new 06/2007

EPIRBs: ARC 2744 GlobalFix, 406 + 121,5 MHz with integrated GPS  
ARC 2797.4 AquaFix 406 + 121,5 MHz with integrated GPS included in life raft.

MOB-System: WAVEfinder UHF – based rescue system with two personal transmitters and antenna receiving bearing and distance.

Fire fighting: Two portable 2 Lit. Foam extinguishers Class A + B,  
Automatic fire-detection and -fighting system in engine room.

Alarm Panels: 3 x Bilges , Grey Water Tank, Engine-Fire-Warning and Hydraulic Oil Level.

Alert System: E-Marine boat guard system with integrated GPS and GSM interface against criminal intents, monitoring several default criteria.

## Accessories

Deck: 9 Fenders,  
5 Mooring Lines, 1 Tow line 40 mtr.  
1 Teak/Niro Deck Table  
4 Teak/Niro Deck Chairs  
Aux. anchor with 40 m line

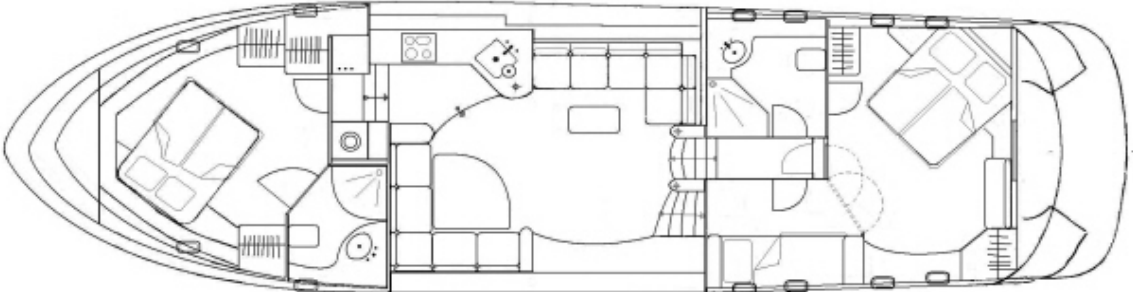
## Remarks:

Modern Gentleman's Yacht with plenty of space for four persons. One of the most complete Continentals ever built. Condition is like new and still under warranty. Today's price as equipped is Euro 1,9 Mio.



**Layout**

Main-Deck



Wheelhouse

